

YOUR TOTAL SYSTEM'S 1-CONTROL TECHNOLOGY

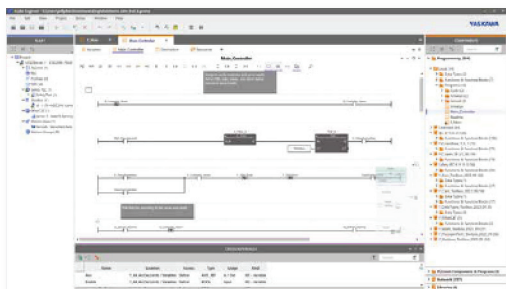
Whether you want the **flexibility** of open system design, the **scalability** of modular system integration or the **certainty** of security and safety—you get it all with the iCube Control platform. With one controller, built to perform impeccably over the life of your system.

Delivering integrated control for Delta, SCARA, 6-axis, Gantry and customer-specific mechanisms.

- + One machine controller and one software engineering tool for Motion, Logic, Safety, HMI and Robotics
- + Integrated EtherCAT machine controller and EtherCAT (FSoE) Safety Master
- + Compatible with a broad range of Yaskawa mechatronic technology

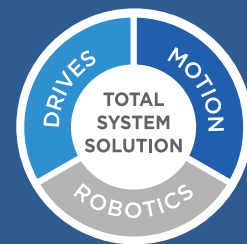
Better Control, Designed for Collaboration

Designed for collaborative working, iCube Engineer gives developers the freedom to program function modules in the language of their choice.



WHY THE iCube from Yaskawa

- Robots, and more run interchangeably under the same controller
- Familiar (not proprietary) programming
- Control all types of mechanisms with one software engineering tool
- Swap mechanism type with minimal changes to application code tool



About Finch

Our goal is to provide every customer with exceptional products, parts and service solutions for their specific manufacturing needs. We partner with the best brands to make them available with the highest levels of customer service. Our experienced staff of engineers and representatives continuously evaluate product options to customize solutions, relevant programming, service, and essential maintenance.

